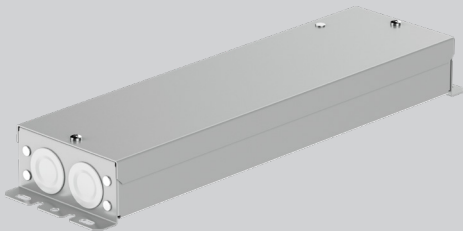


R-LINE®  
POWER SUPPLY

R®



CERTIFICATIONS & COMPLIANCE



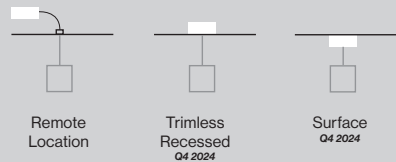
FEATURES

5 YEAR  
limited  
led warranty

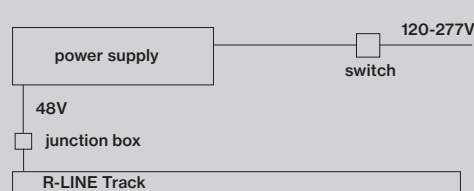
PERFORMANCE

- Proprietary 48V driver with 1% dimming technology
- UL rated enclosure
- Short circuit protection
- Various mounting options (*coming soon*)

MOUNTING



REMOTE DRIVER

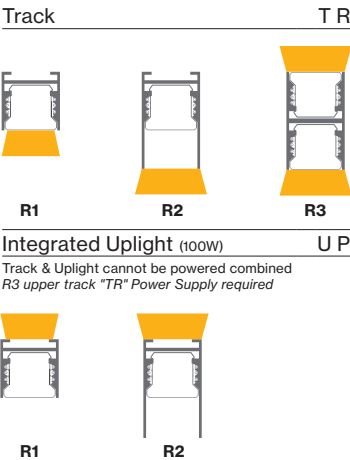


Catalog Number Example

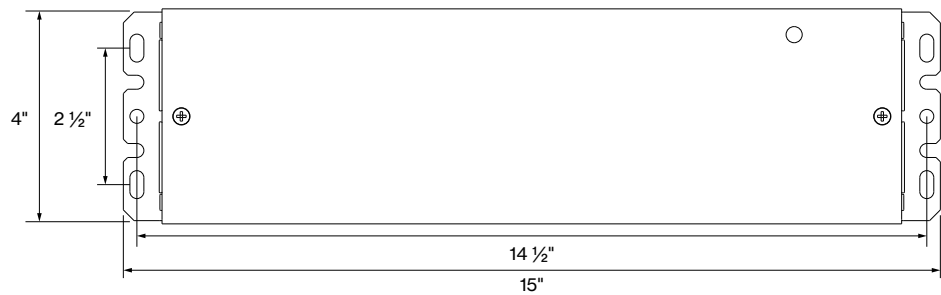
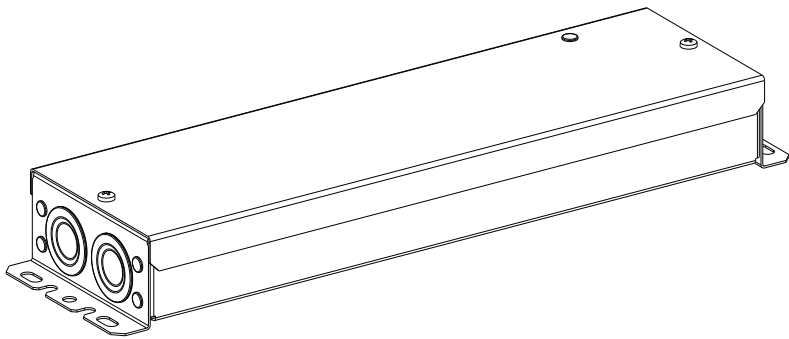
RLPS-REM-TR-TW-UNV-48V-100W-010V



<b>A SYSTEM</b> R-LINE RLPS	<b>F INPUT VOLTAGE</b> 120 - 277V UNV
<b>B MOUNTING</b> Remote Box REM Mud-in Box coming soon RTL Surface Mtd. Box coming soon SUR	<b>G OUTPUT VOLTAGE</b> 48V low constant voltage 48 V 3 pole connection 48V+ / 48V- / PVM
<b>C HOUSING COLOR</b> Raw BL Black surface mount only WH White surface mount only remote box & mud-in only available in raw	<b>H CAPACITY</b> 60W 060W 100W 100W 2x60W 120W 2x100W 200W
<b>D TYPE</b> Track TR Integrated Uplight (60W or 100W only) UP track & uplight cannot be powered combined	<b>I DIMMING</b> 0-10V logarithmic, 1% dimming 010V 0-10V logarithmic, dim-to-off - coming soon D10V for 0-10V linear dimming curve contact BASO
<b>E CIRCUIT</b> 1-Circuit 1C 2-Circuit 2C Tunable White TW	<b>J CCEA</b> coming soon CCEA Rated (Chicago Plenum) CP remote box & mud-in only

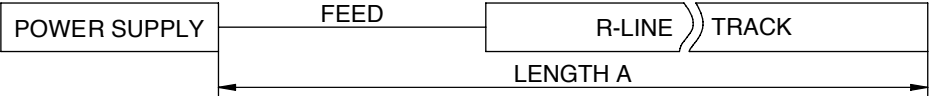


DIMENSIONS



WIRING DIAGRAM

LENGTH A (see diagram below)					
	12 AWG	14 AWG	16 AWG	18 AWG	20 AWG
60W	150'	150'	90'	60'	40'
100W	90'	90'	60'	40'	20'



\* Due to voltage drop and to fulfill EMC requirements, total fixture power [W] must be between 60% & 95% of the drivers capacity.

Calculations based at max capacity of the driver.

\*\*Please check distance limits (voltage drop table)

- Max possible fixture power < 100W.

R-LINE mounting instructions

Get access to the R-LINE mounting instructions faster by scanning the QR code.

<https://www.basolighting.com/resources/mounting-instructions/baso>

