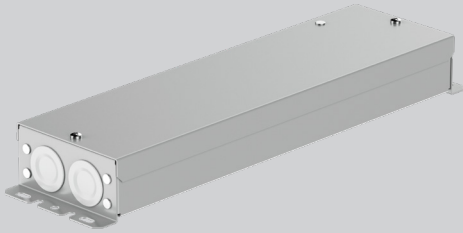


R-LINE® POWER SUPPLY



CERTIFICATIONS & COMPLIANCE



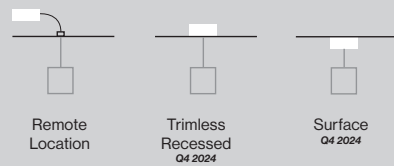
FEATURES

5 YEAR
limited
led warranty

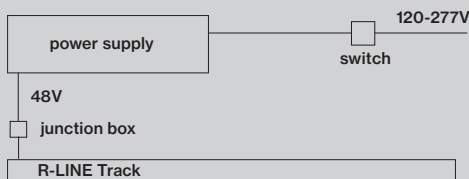
PERFORMANCE

- Proprietary 48V driver with 1% dimming technology
- UL rated enclosure
- Short circuit protection
- Various mounting options (*coming soon*)

MOUNTING



REMOTE DRIVER



Catalog Number Example

RLPS-REM-TR-1C-UNV-48V-100W-010V

A B D E F G H I

A SYSTEM

R-LINE R L P S

B MOUNTING

Remote Box REM
Mud-in Box coming soon RTL
Surface Mtd. Box coming soon SUR

C HOUSING COLOR

Raw B L
Black surface mount only
White surface mount only WH
remote box & mud-in only available in raw

D TYPE

Track T R
Integrated Uplight (60W or 100W only) U P
track & uplight cannot be powered combined

E CIRCUIT

1 Circuit 1 C
2 Circuit not available for uplight 2 C
each track circuit needs its own driver

F INPUT VOLTAGE

120 - 277V UNV

G OUTPUT VOLTAGE

48V low constant voltage 48 V
3 pole connection 48V+ / 48V- / PVM

H CAPACITY

60W 0 6 0 W
100W 1 0 0 W
2x60W not available for uplight 1 2 0 W
2x100W not available for uplight 2 0 0 W

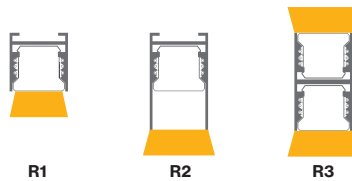
I DIMMING

No Dimming N O D
0-10V logarithmic, 1% dimming 0 1 0 V
0-10V logarithmic, dim-to-off - coming soon D 1 0 V
for 0-10V linear dimming curve contact BASO

J CCEA coming soon

CCEA Rated (Chicago Plenum) C P
remote box & mud-in only

Track T R

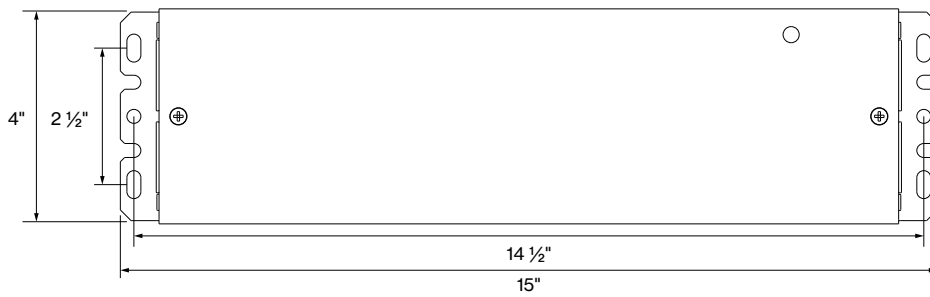
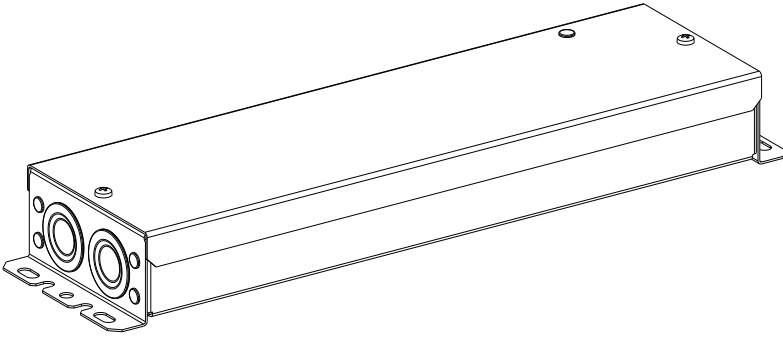


Integrated Uplight (100W) U P

Track & Uplight cannot be powered combined
R3 upper track "TR" Power Supply required

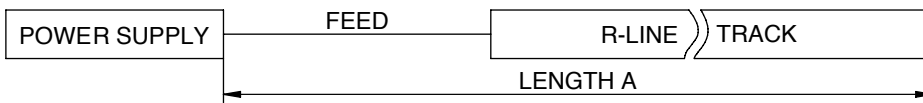


DIMENSIONS



WIRING DIAGRAM

LENGTH A (see diagram below)					
	12 AWG	14 AWG	16 AWG	18 AWG	20 AWG
60W	150'	150'	90'	60'	40'
100W	90'	90'	60'	40'	20'



* Due to voltage drop and to fulfill EMC requirements, total fixture power [W] must be between 60% & 95% of the drivers capacity.

Calculations based at max capacity of the driver.

**Please check distance limits (voltage drop table)

- Max possible fixture power < 100W.