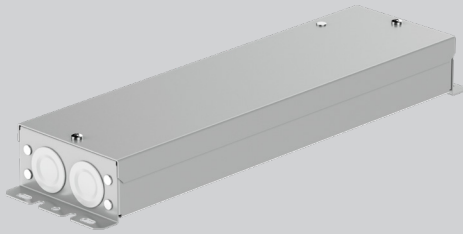


R-LINE® POWER SUPPLY



CERTIFICATIONS & COMPLIANCE



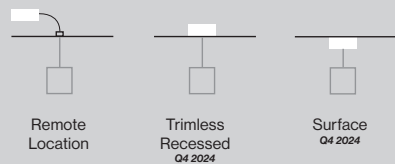
FEATURES

5 YEAR
limited
led warranty

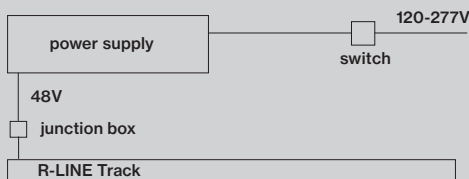
PERFORMANCE

- Proprietary 48V driver with 1% dimming technology
- UL rated enclosure
- Short circuit protection
- Various mounting options (*available Q1 2024*)

MOUNTING



REMOTE DRIVER



Catalog Number Example

RLPS-REM-BL-TR-1C-UNV-48V-100W-010V

A B C D E F G H I

A SYSTEM

R-LINE R L P S

F INPUT VOLTAGE

120 - 277V UNV

B MOUNTING

Remote Box REM

Mud-in Box available Q3 2024 RTL

Surface Mtd. Box available Q3 2024 SUR

G OUTPUT VOLTAGE

48V low constant voltage 48 V

3 pole connection 48V+ / 48V- / PVM

C HOUSING COLOR

Raw

Black surface mount only BL

White surface mount only WH

remote box & mud-in only available in raw

H CAPACITY

60W 0 6 0 W

100W 1 0 0 W

2x60W 1 2 0 W

2x100W 2 0 0 W

D TYPE

Track T R

Integrated Uplight (100W) U P

track & uplift cannot be powered combined

I DIMMING

No Dimming N O D

0-10V logarithmic, 1% dimming 0 1 0 V

0-10V logarithmic, dim-to-off - available Q1 2024 D 1 0 V

for 0-10V linear dimming curve contact BASO

E CIRCUIT

1 Circuit 1 C

2 Circuit 2 C

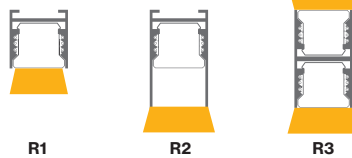
each track circuit needs its own driver

J CCEA available Q1 2024

CCEA Rated (Chicago Plenum) C P

remote box & mud-in only

Track T R



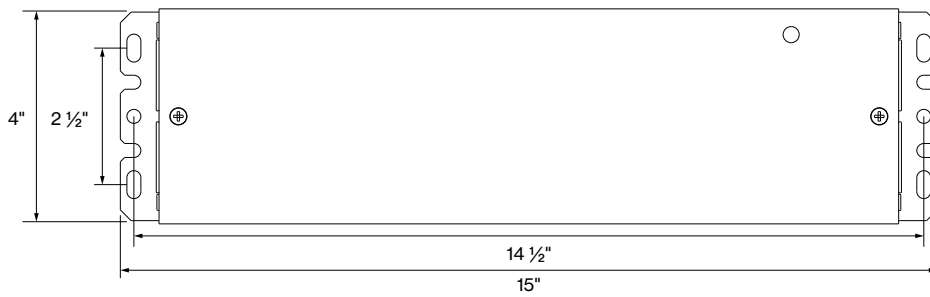
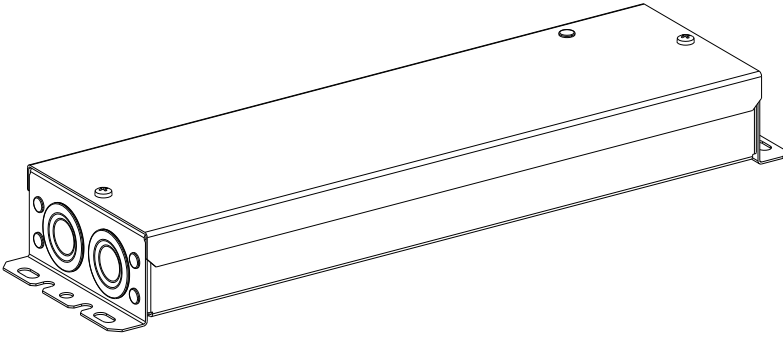
Integrated Uplight (100W) U P

Track & Uplight cannot be powered combined
R3 upper track "TR" Power Supply required



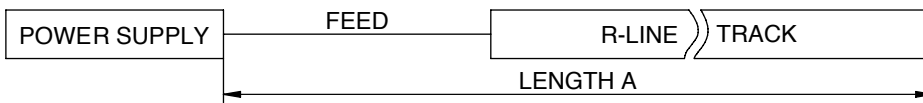
BASO
basolighting.com

DIMENSIONS



WIRING DIAGRAM

LENGTH A (see diagram below)					
	12 AWG	14 AWG	16 AWG	18 AWG	20 AWG
60W	150'	150'	90'	60'	40'
100W	90'	90'	60'	40'	20'



* Due to voltage drop and to fulfill EMC requirements, total fixture power [W] must be between 60% & 95% of the drivers capacity.

Calculations based at max capacity of the driver.

**Please check distance limits (voltage drop table)

- Max possible fixture power < 100W.