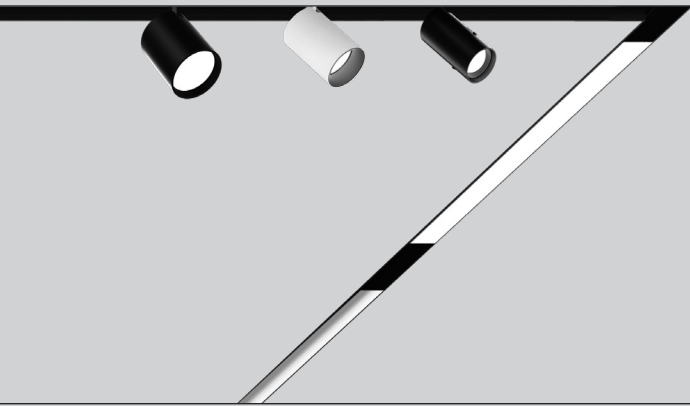
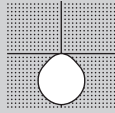


M-LINE DIRECT



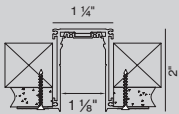
PERFORMANCE

- 48V low voltage track
- Multiple inset options
- CRI > 90+
- Flexible magnetic profile system

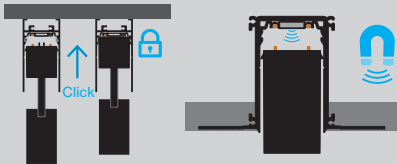


MOUNTING

Recessed



MAGNETIC ATTACHMENT



10 Business Days for all QuickShip items

- Maximum quantity: 400'
- "QuickShip" must be clearly listed on PO.
- QuickShip items must be on Separate Purchase Order.
- QuickShip orders must be received with complete and correct catalog numbers.
- Variant request will not qualify for QuickShip program.
- QuickShip orders must be received before 2 pm EST. After 2 pm, shipping will be based on the next business day.
- QuickShip orders are based on standard BASO terms for payment.
- Order change of any type will affect shipping times.
- Partial shipments may be required based on current factory inventory.



5 YEAR
limited
led warranty

Catalog Number Example

MLINS1.2-RTL-BL-48V-010V-ST-04FT

A RANGE

QS M-LINE 1.2 MLINS1.2

B MOUNTING

QS Recessed trimless RTL

C COLOR

QS Black BL

D VOLTAGE

QS 48V 48V
constant voltage track

E DIMMING

QS 0-10V 1% single control 010V

F SHAPE / PATTERN

QS Linear ST

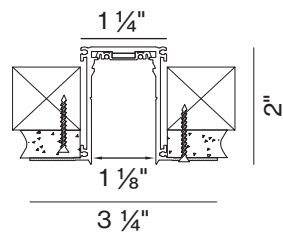
G DIMENSIONS IN FEET

QS Linear 4' 04FT
QS Linear 8' 08FT
Custom length XXFT
(QS in 2' increments only)

BASO
basolighting.com
xalusa.com

M-LINE 1.2 channel dimensions

RECESSED



Possible shapes top view

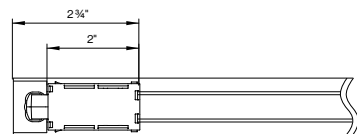
please provide RCP to ensure correct shape orientation

LINEAR

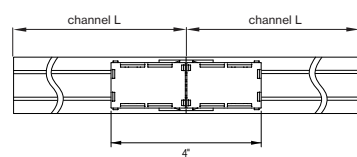


Power feeder locations

POWER FEED



LINEAR POWER COUPLER



M-LINE Mounting Instructions

Get access to the M-LINE mounting instructions faster by scanning the QR code.

<https://www.xalusa.com/resources/mounting-instructions/m-line>

