

# FLEX-LITE™

## DIRECT



### CERTIFICATIONS & COMPLIANCE

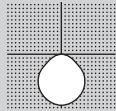


### FEATURES



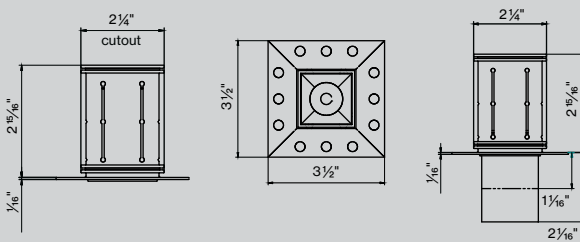
### PERFORMANCE

- Up to 70lm/W efficiency
- Compatible with FleX-LITE
- CRI > 90
- Recessed

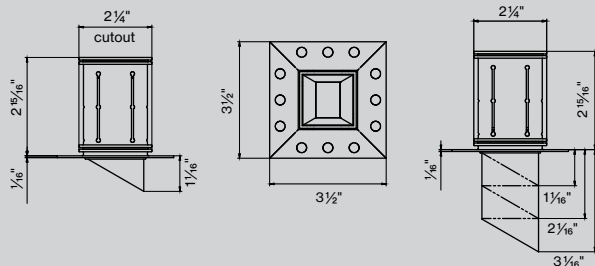


### DIMENSIONS

#### Spot



#### Wallwash



### Specification/Instructions

Use the drop downs to select each cells attribute.

1. Select mounting type, housing color, color temperature, and cell color
2. Select Dim config for cell formation
3. Cell attribute will auto fill depending on selection made for each cell.

<b>Mounting</b>	<input type="text"/>	<b>Housing Color</b>	<input type="text"/>
<b>Color temp</b>	<input type="text"/>	<b>Cell Color</b>	<input type="text"/>

**Cell 1**

Lens

DIM Config.

NOTES

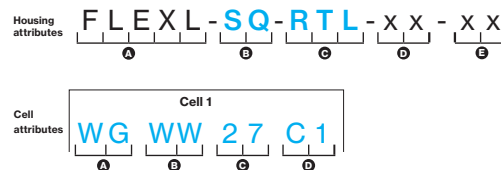
<b>Dim Config.</b>	<input type="text" value="A"/>	<input type="text" value="1"/>
--------------------	--------------------------------	--------------------------------

### Attributes Key

Use the housing and cell attributes key.

<b>Dim Config.</b>	<input type="text" value="A"/>	<input type="text" value="1"/>
--------------------	--------------------------------	--------------------------------

Housing Attributes Key	Cell Attributes Key
<b>A RANGE</b> FLEXLITE FLEXL	<b>A CELL TRIM COLOR</b> Black Gloss B G Black Matte B M Chrome C H White Gloss W G White Matte W M
<b>B PATTERN</b> Single 1x1 SN 1 x 1	<b>C CELL LENS</b> Spot 14 deg S P Medium 24 deg M D Flood 36 deg F L Wide 60 deg W I Wall Wash W W Blind Cover B C
<b>C MOUNTING</b> Recessed Trimless R T L	<b>D CELL COLOR TEMPERATURE</b> 2700K CRI 90 2 7 3000K CRI 90 3 0 3500K CRI 90 3 5 4000K CRI 90 4 0
<b>D HOUSING COLOR</b> White W H Black B L Gray G R <small>*RTL in white only</small>	<b>E CELL DIMMING CHANNEL</b> single channel C 1



# FLEX-LITE™

## DIRECT



### CERTIFICATIONS & COMPLIANCE

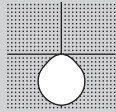


### FEATURES

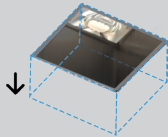


### PERFORMANCE

- Up to 70lm/W efficiency
- CRI > 90
- Recessed

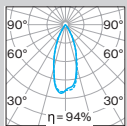


### DIAGRAM



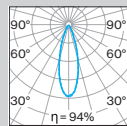
### LIGHT DISTRIBUTIONS

#### SPOT LENS 14°



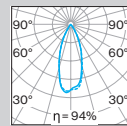
C0 C180  
C90 C270  
LED array 2.3W / 245lm  
106 lm/W

#### MEDIUM LENS 30°



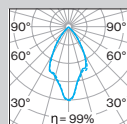
C0 C180  
C90 C270  
LED array 2.3W / 225lm  
98 lm/W

#### FLOOD LENS 36°



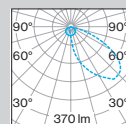
C0 C180  
C90 C270  
LED array 2.3W / 235lm  
101 lm/W

#### WIDE LENS 57°



C0 C180  
C90 C270  
LED array 2.3W / 215lm  
93 lm/W

#### WALL WASH



C0 C180  
C90 C270  
LED array 4.9 W / 365lm  
75 lm/W

### MOUNTING

Recessed Trimless

### HOUSING COLOR

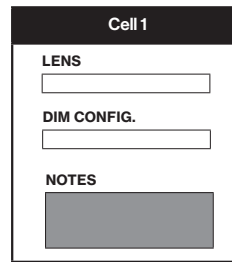
### COLOR TEMP

### CELL COLOR

### DIM CONFIG.

A

1



Housing attributes

FLEXL-SQ-RTL- - -

Cell attributes

Cell 1

**BASO**  
basolighting.com

Housing Configuration Code

FLEXLS101 00

Cell Configuration Code

XCS1 00 0

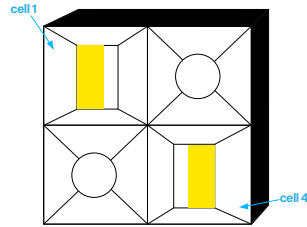
## Power supply

### 1. LINE CONTROL

#### X-LITE 0-10V POWER SUPPLIES

	<b>SPOT CELLS</b>	<b>WALLWASH CELLS</b>
1 cell	XLPS - 12 - SP - 001	XLPS - 12 - WW - 001
2 cell	XLPS - 12 - SP - 002	XLPS - 12 - WW - 002
3 cell	XLPS - 12 - SP - 003	XLPS - 12 - WW - 003
4 cell	XLPS - 12 - SP - 004	XLPS - 12 - WW - 004
5 cell	XLPS - 12 - SP - 005	XLPS - 12 - WW - 005
6 cell	XLPS - 12 - SP - 006	XLPS - 12 - WW - 006
7 cell	XLPS - 12 - SP - 007	XLPS - 12 - WW - 007
8 cell	XLPS - 12 - SP - 008	XLPS - 12 - WW - 008
9 cell	XLPS - 12 - SP - 009	XLPS - 12 - WW - 009

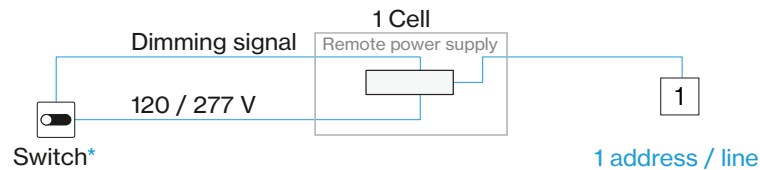
\*X-Lite configurations with both Spot and Wallwash cells will need two separate remote drivers



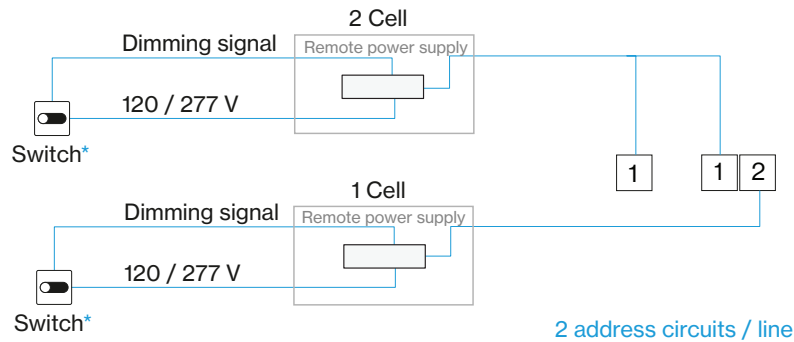
## Wiring diagrams

### 1. LINE CONTROL

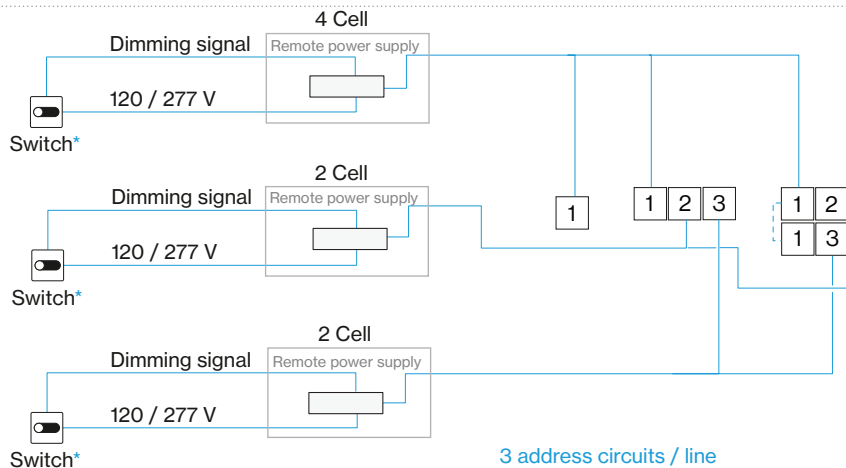
#### 0-10V DIM Single Circuit



#### 0-10V DIM Dual Circuit

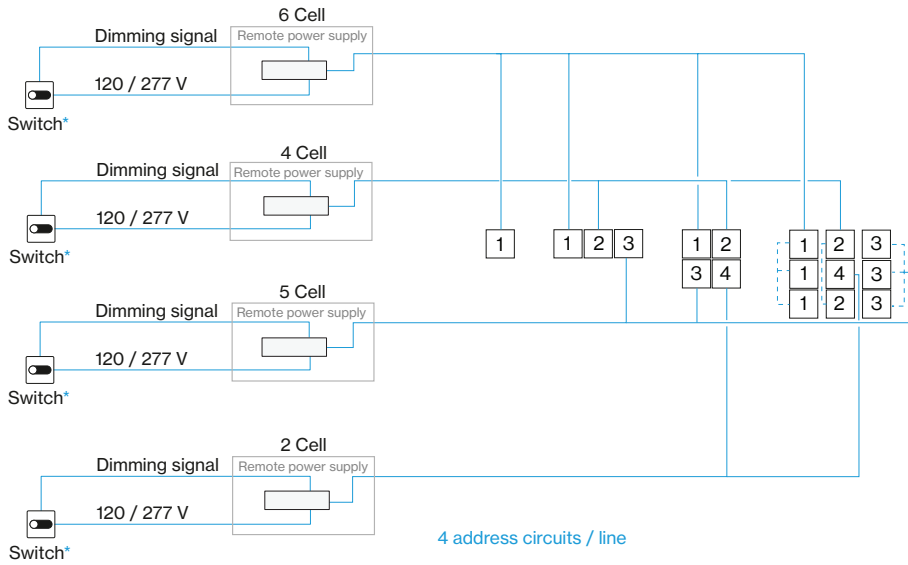


#### 0-10V DIM Tri Circuit



## Wiring diagrams continued

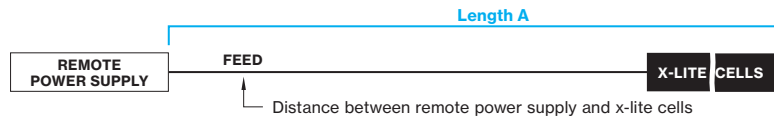
### 0-10V DIM Quad Circuit



## Length range per power supply

### POWER SUPPLY

Length A max 150'



BASO  
basolighting.com

### Mounting instructions

Get access to the mounting instructions faster by scanning the QR code.

<https://www.basolighting.com/resources/mounting-instructions/flex-lite>

